

EASYFIT+ RETROFIT INSTALLATION PROCESS IN PICTURES

SHOWER WASTE WATER HEAT RECOVERY SYSTEM



1802331 / 1806308 / 1310312 / 1401325

IMPORTANT NOTE – Please Read

This picture guide is supplementary and does not replace the installation instruction manual supplied with the Easyfit+. Before starting installation please read all content provided with the Easyfit+.

Before starting check section 3 of the installation instructions supplied with the Recoup Easyfit+ for pre-installation guidance on locating a suitable area for installation.

The Recoup Easyfit+ needs to be installed horizontally under the bath or the shower tray. Installation should take place on a flat surface capable of supporting the WWHRS. The location should allow for access to all parts and allow routine maintenance (E.g. Cleaning) to be carried out with relative ease.

The Recoup Easyfit+ must be located within the heating envelope of the building.

The Easyfit+ must be installed with consideration to the most recent 'Approved document – Part H of the Building Regulations' for preventing the ingress of foul sewer gases.

Before starting the installation make sure you know which installation method is to be used. In a retrofitted installation System B is the most common and will be the method primarily shown here. The Easyfit+ can also be installed with the System A or System C installation method.

Use the images and instructions on the following pages to assist you with the installation process. Work down each column following the numbered text below each corresponding image. An installation video can also be found on our website to assist, www.recoupwwhrs.co.uk.

INSTALLATION CONTENTS

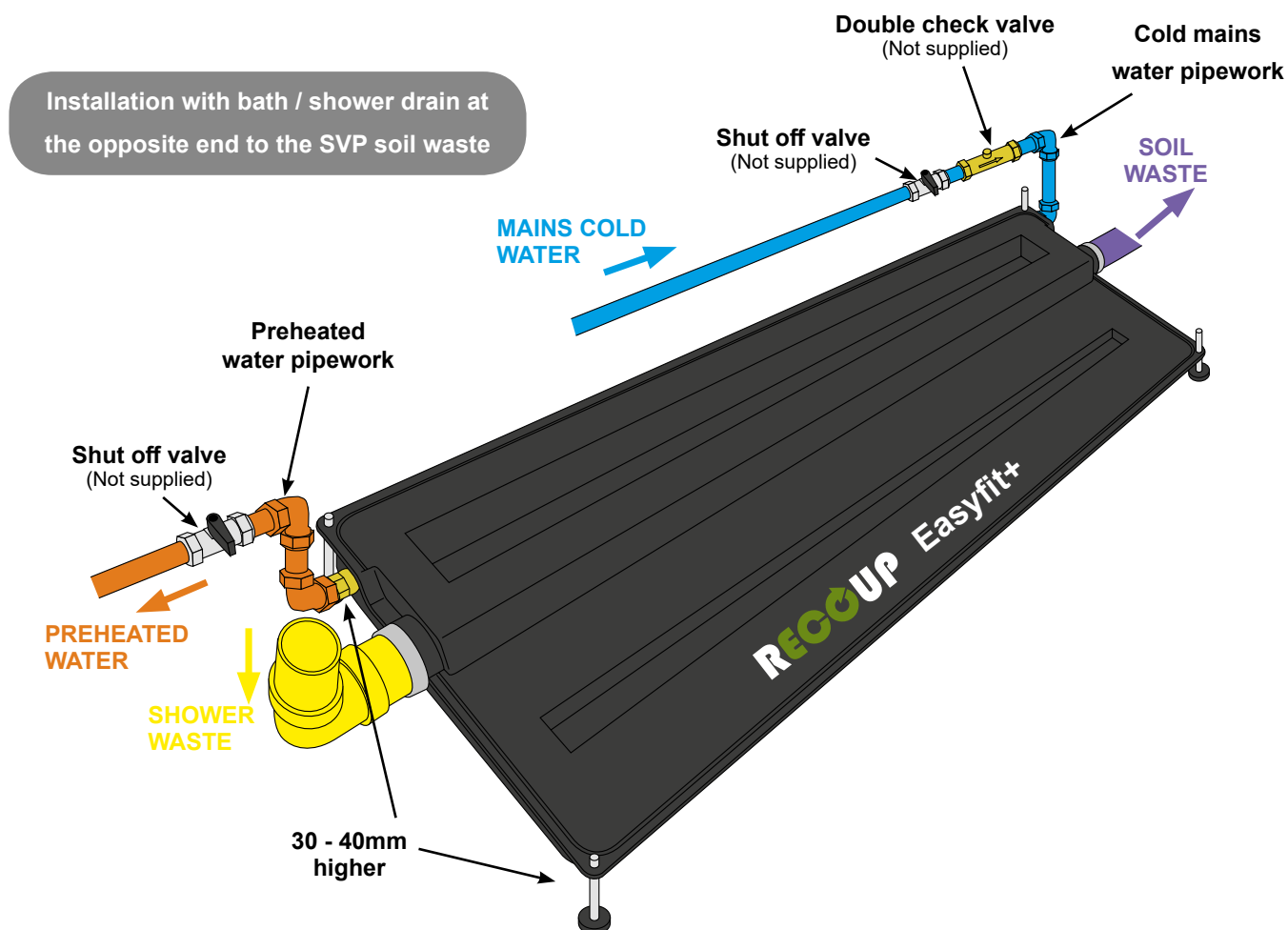
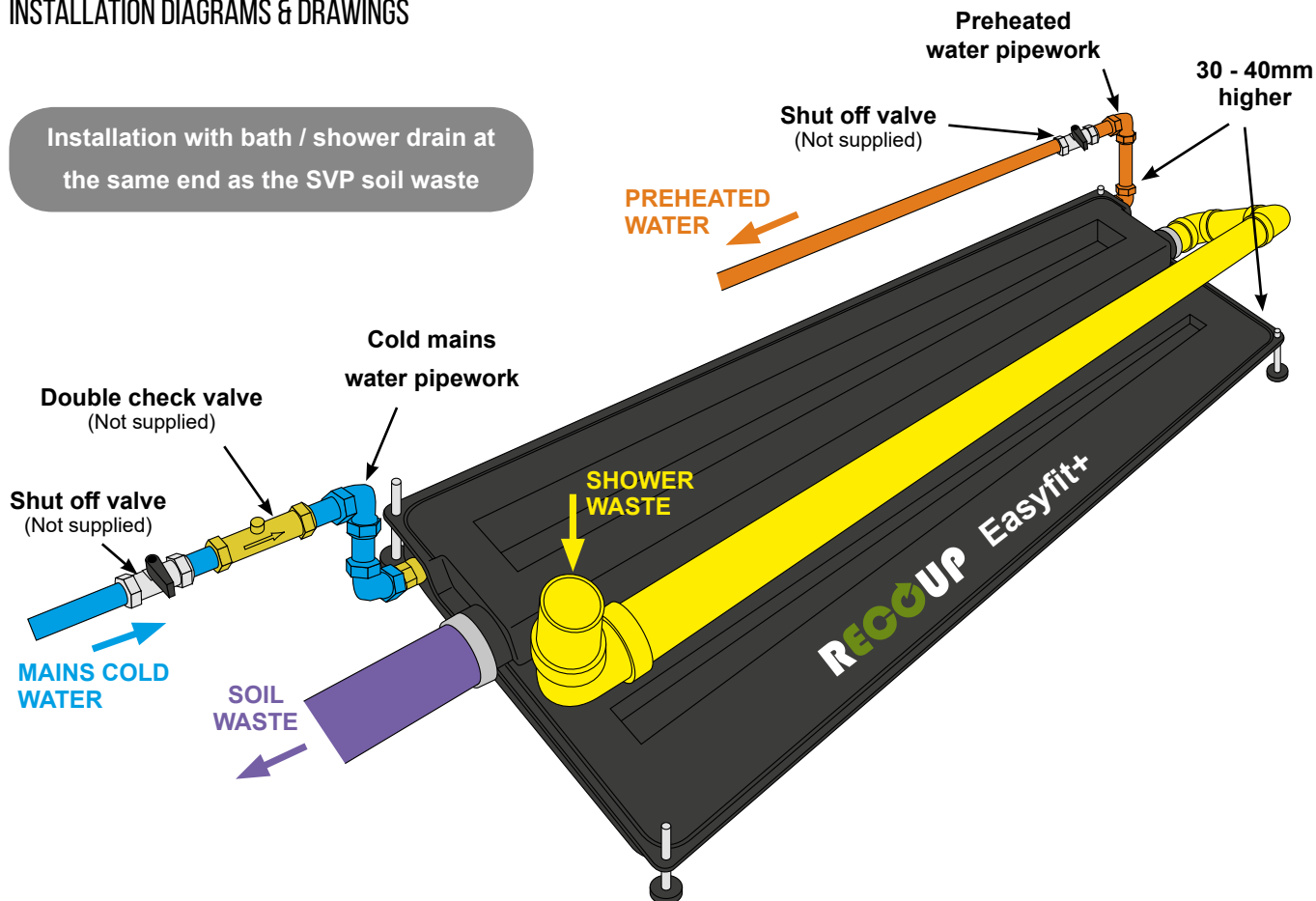


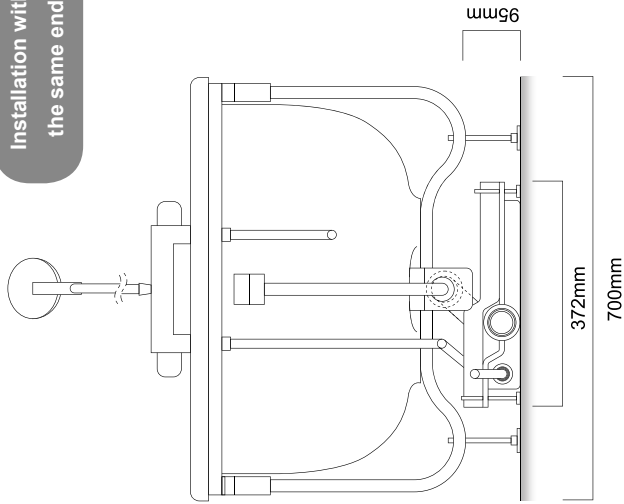
- 1 - RECOUP Easyfit+ WWHRS unit
- 2 - Installation instructions
- 3 - NCM (SAP) identifier label for nearby water or service cupboard.

IMPORTANT NOTE

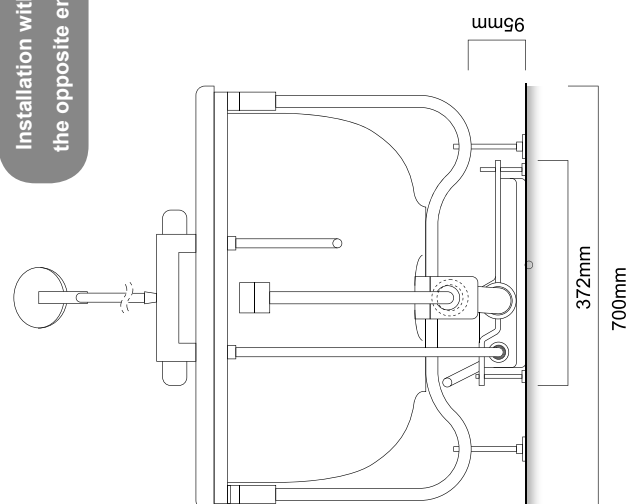
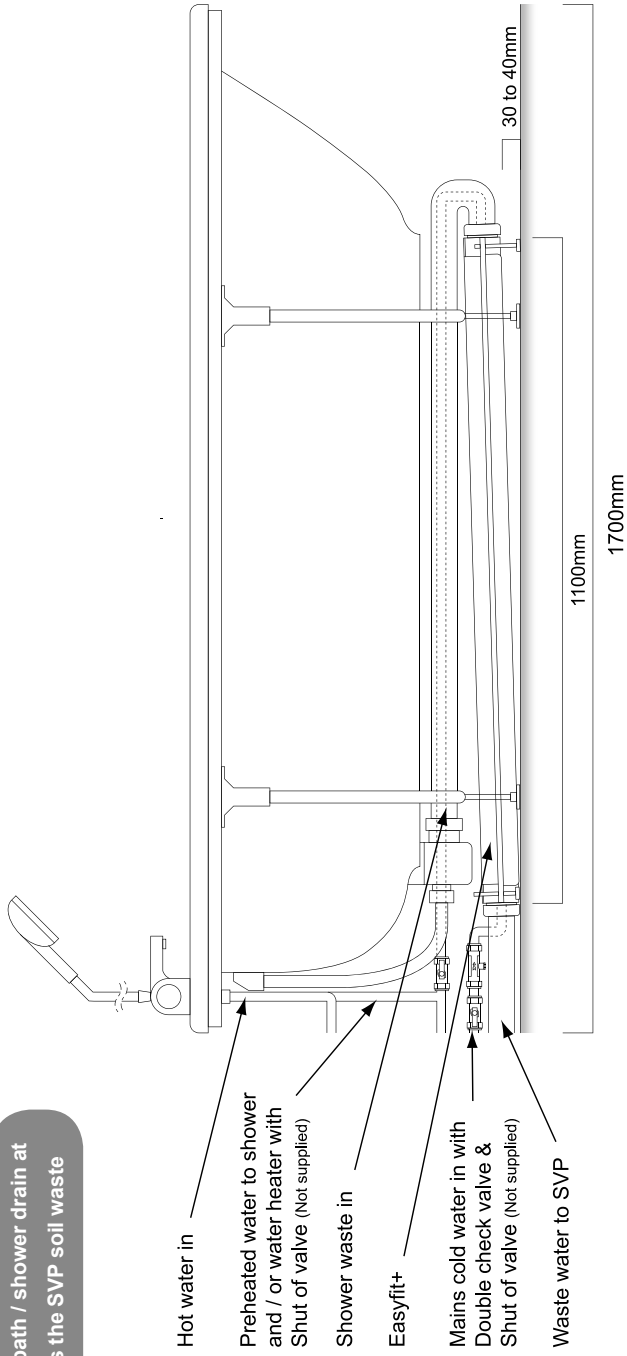
To ensure SAP compliance check buildings spec for correct installation method (System A, B or C)

INSTALLATION DIAGRAMS & DRAWINGS

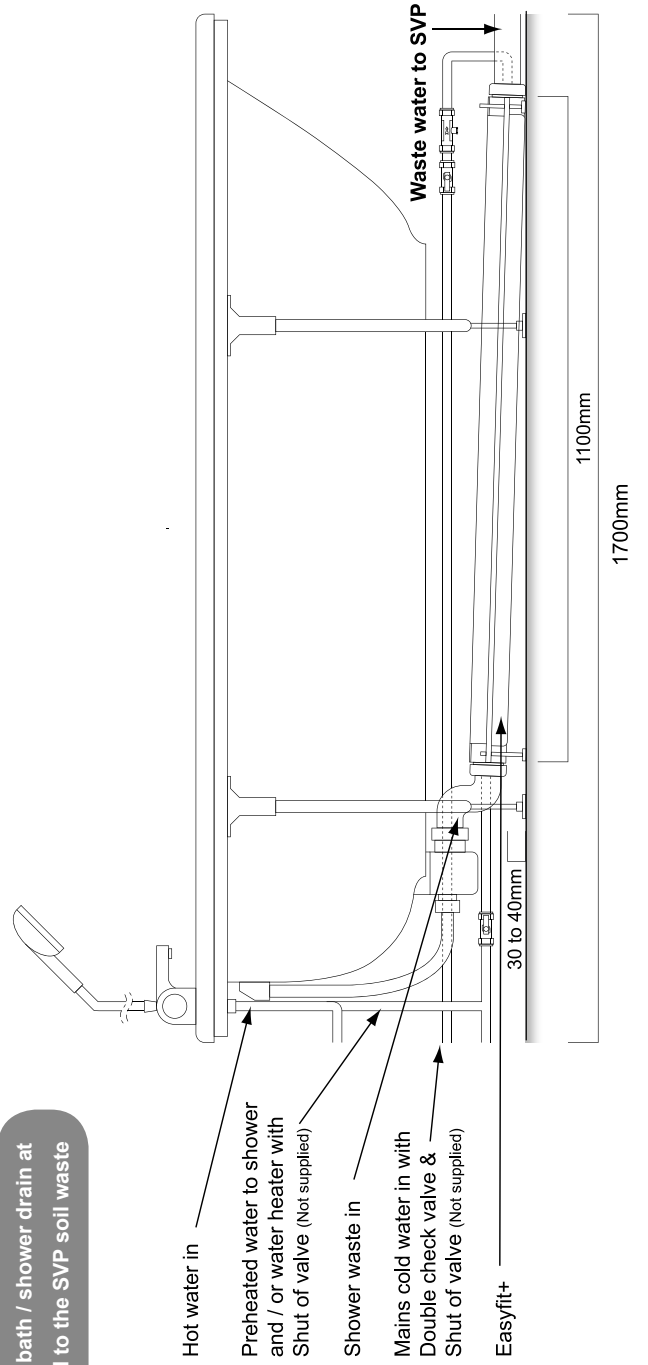




Installation with bath / shower drain at the same end as the SVP soil waste



Installation with bath / shower drain at the opposite end to the SVP soil waste



SETTING UP TO RETROFIT THE RECOUP EASYFIT+



1. To retrofit the Recoup Easyfit+ below the shower system installed must have a thermostatic mixer. This can be either be deck mounted onto the bath or wall mounted above it.



2. To start retrofitting the Recoup Easyfit+ remove the bath panel from the side of the bath along with any structure supporting the panel that restricts access.



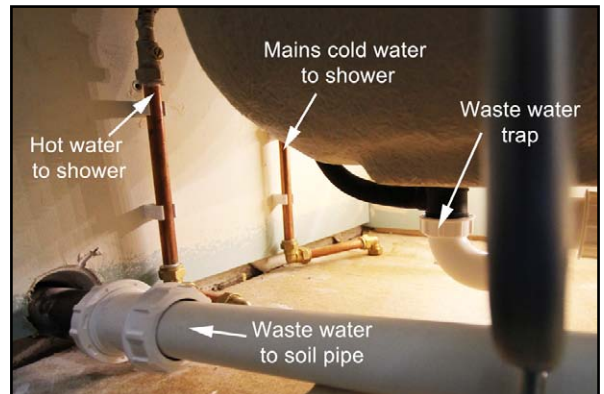
3. If the bath has a central foot installed this will need to be removed to accommodate the Easyfit+.



4. If a central supporting foot is removed, then alternative raised support should be installed that will bridge over the area where the Easyfit+ needs to be positioned.



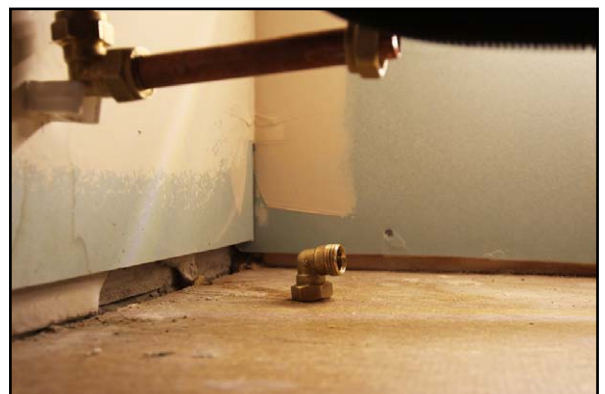
5. If required remove part of the added support to allow access during the installation.



6. Look at the water and waste pipe connections and identify the waste water trap, the waste water out pipe, the hot water pipe to the shower and the mains cold water pipe to the shower.



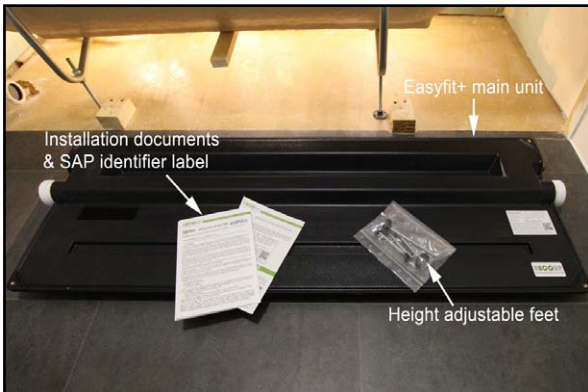
7. Disconnect the waste water trap from the bath along with the waste water pipes to where they connect to the SVP soil pipe.



8. Ensure that the mains cold water has been switched off at the stopcock then separate the pipe for the mains cold water to the shower.



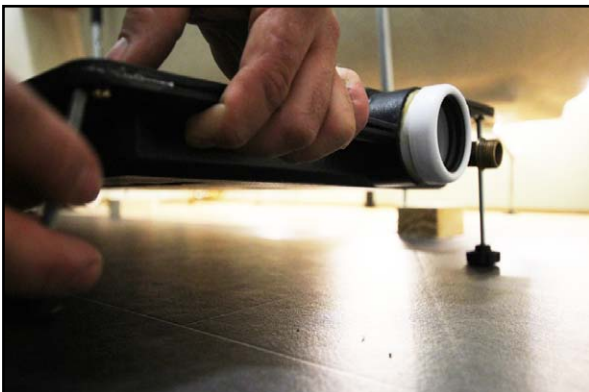
9. Connect a full flow shut off valve (not supplied) and a double check valve (not supplied) to the mains cold water pipe. Ensure all fixings are fully tightened and joints sealed.



10. Unbox the Recoup Easyfit+. Included within the box is the Easyfit+ main unit, four height adjustable feet, the installation documents and SAP identifier label.



11. The Easyfit+ incorporates symmetrical connections at either end. Orientate the unit whichever way best suits for the position of the mains cold water and waste water pipe connections under the bath.



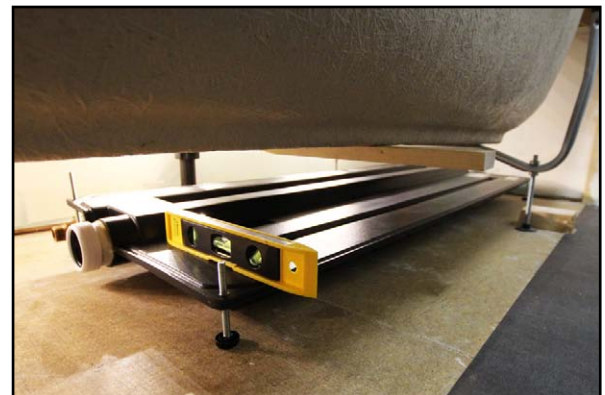
12. Screw the height adjustable feet into the threaded inserts in the corners of the Easyfit+ unit. Use the longer threads on the higher edge of the Easyfit+.



13. Position the Easyfit+ under the bath.



14. Adjust the feet so that the end of the Easyfit+ furthest from the SVP soil connection is 30mm to 40mm higher than the other end. This is so that the shower waste water flows through the unit from one end to the other.

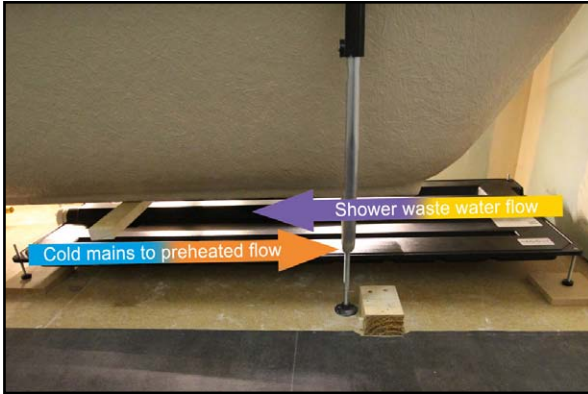


15. Ensure that the unit is horizontal at both ends perpendicular to the flow of shower waste water.

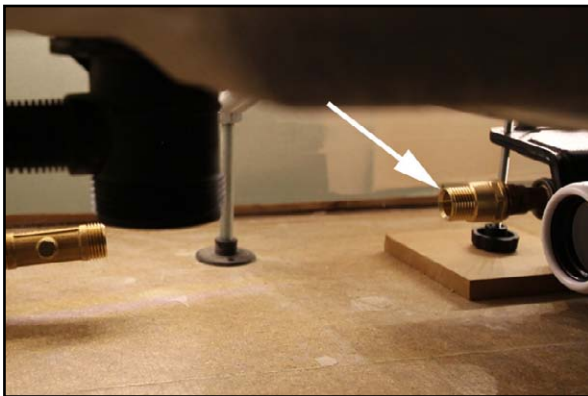


16. Even packing under each adjustable foot may be required if the waste water outlet at the lower end of the Easyfit+ is not higher than the connection to the soil pipe.

CONNECTING THE MAINS COLD & PREHEATED WATER



17. The flow of mains cold to preheated water needs to run in the opposite direction to the flow of the shower waste water.



18. Connect a female half inch BSP connector (not supplied) to the half inch BSP male connection at the lower end of the Easyfit+ unit.



19. Connect the opposite end of the female half inch BSP connector to the double check valve and full flow shut off valve previously connected to the mains cold water.



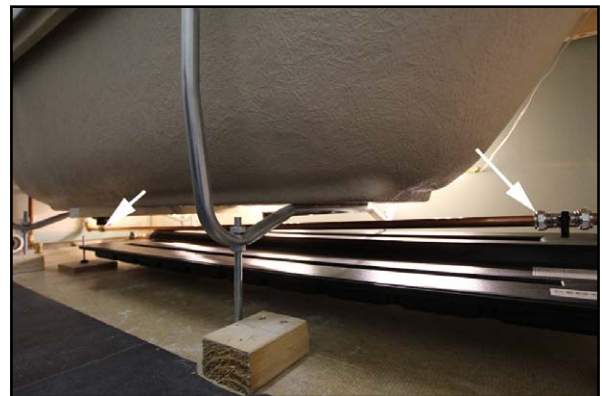
20. Ensure all fixings are fully tightened and joints sealed.



21. Connect a second female half inch BSP connector (not supplied) to the half inch male connection for the preheated water at the higher end of the Easyfit+.



22. Connect a full flow shut off valve (not supplied) to assist with easy removal and maintenance.



23. Connect the preheated water output to what was the mains cold water connection on the showers thermostatic mixer.



24. Ensure all fixings are fully tightened and joints sealed.



25. This setup creates the system B installation method supplying preheated water to the shower only. For system A installations a T joint would be required to also send the preheated water to the water heater.

CONNECTING THE SHOWER WASTE



26. Using 40mm push fit, or 43mm solvent weld pipe, connect the warm shower water in to the bath shower trap. The warm shower water in is the highest end of the Easyfit+.

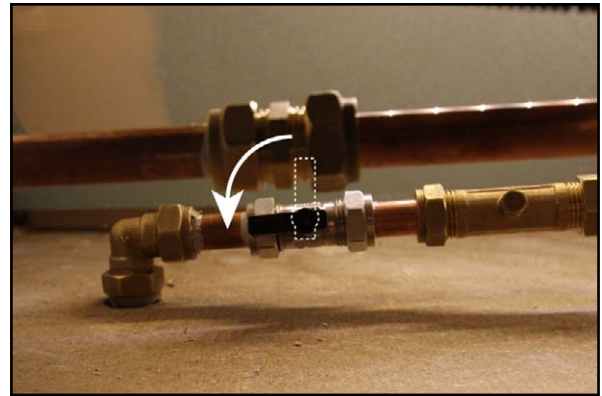


27. When the highest point is at the opposite end to bath trap the pipes can be run above the lower profile section of the Easyfit+.



28. Using 40mm push fit or 43mm solvent weld pipe, connect the waste water out at the lower end of the Easyfit+ unit to the SVP soil pipe. Ensure all fixings are fully tightened and sealed.

COMMISSIONING THE EASYFIT+



29. Ensure the cold mains water is turned back on at the stopcock. Open the full flow shut off valve on the mains cold water feed to start the cold water flow into the Easyfit+.



30. Open the full flow shut off valve on the preheated water pipe to start the flow from the Easyfit+



31. Replace any bath supports removed to allow access to install the Recoup Easyfit+



32. Replace the bath panel and any supporting structure.


33. Please check and complete the following important points:

- a) Ensure the preheated water supply is only feeding the DHW water heater and the cold water inlet of the shower's thermostatic mixing valve (System A), the cold inlet of the shower's thermostatic mixing valve only (System B) or the water heater only (System C).
- b) The preheated water supply from the RECOUP Easyfit+ is clearly labelled to avoid future connections of other services. Preheat supply tape is available for this.
- c) Pipework between the RECOUP Easyfit+ and the water heater and/or cold water inlet of the thermostatic mixing valve is insulated.
- d) When the complete system is being checked and pressure tested, the RECOUP Easyfit+ must be isolated if the system testing is to proceed above 10 bar.
- e) Ensure the SAP label supplied correctly identifies the System installed and is applied near to the water heater in the property (Part 3).
- f) Register the installation (Section 8) to generate the installation / warranty certificate.



*Preheat supply tape
(Not supplied)*

3

NCM (SAP) IDENTIFIER	RECOUP Easyfit+	Recoup Energy Solutions Ltd, PO Box 365, Eyn, IP22 9BH
Technology type:	Waste Water Heat Recovery System	
Technology category:	Instantaneous Shower Heat Recovery	
Brand name:	RECOUP	
Model qualifier:	System A / System B / System C (Delete as appropriate)	
This dwelling has been fitted with a Waste Water Heat Recovery System for Showers which is recognised by the Government's Standard Assessment Procedure (SAP) for Energy rating of dwellings. Note: One label must be permanently fixed to the WWHRS unit and another to a nearby Boiler or Service Cupboard.		
IMPORTANT PLEASE REGISTER to comply with SAP requirements. Scan here or visit our website registration page registration.recoupwwhrs.co.uk		

Water heater SAP identifier label

Visit the RECOUP Easyfit+ product page on our website for more installation support. Visit easyfit.recoupwwhrs.co.uk or scan this QR code.

For all technical or installation queries, please contact RECOUP directly. For product related issues, please contact your place of purchase.



MAINTENANCE

The maintenance required for the RECOUP Easyfit+ is very minimal, however, it is recommended to clean the unit periodically to avoid any reduction in efficiency. This cleaning will remove any build-up of soap and dirt residue on the outside of the copper pipe where the waste water passes.

The following maintenance procedure is suggested:

A hair filtering device as part of the bath / shower trap is recommended to reduce the amount of hair that gets into the RECOUP Easyfit+.

Every 2 months, use 1-2 litres of hot water up to 70°C (re-use waste water from boiling potatoes or pasta to save energy) and apply into the bath / shower-tray drain in 2 stages, with around 5 minutes between. (This will help dissolve soap residues on the copper pipes in the RECOUP Easyfit+). Use the shower shortly after to make sure any debris is flushed away. It is possible to use chemical agents sold for declogging as a cleaning agent if required.

If no maintenance is carried out, the RECOUP Easyfit+ will work, but the efficiency may decrease over time.

WARRANTY

The RECOUP Easyfit+ comes with a 2 year warranty unless agreed otherwise. This starts from either the date of invoice from Recoup Energy Solutions Ltd or purchase from partnered trade distributors. Installation registration should be completed as part of the guarantee requirements.

This warranty is conditional on the product being installed in accordance with these instructions (Installation and ALL requirements for SAP, if product is to be recognised for Energy efficiency calculations), correct plumbing practices and Building Regulations.

REGISTRATION

The installation of the RECOUP Easyfit+ WWHRS should be registered for SAP and guarantee requirements. Registration can be completed by submitting an online installation registration form. Visit registration.recoupwwhrs.co.uk or scan the QR code to access the form.

Once submitted you will receive your installation registration certificate by email.



Visit our website registration page or scan the QR code

[REGISTRATION.RECOUPWWHRS.CO.UK](https://registration.recoupwwhrs.co.uk)