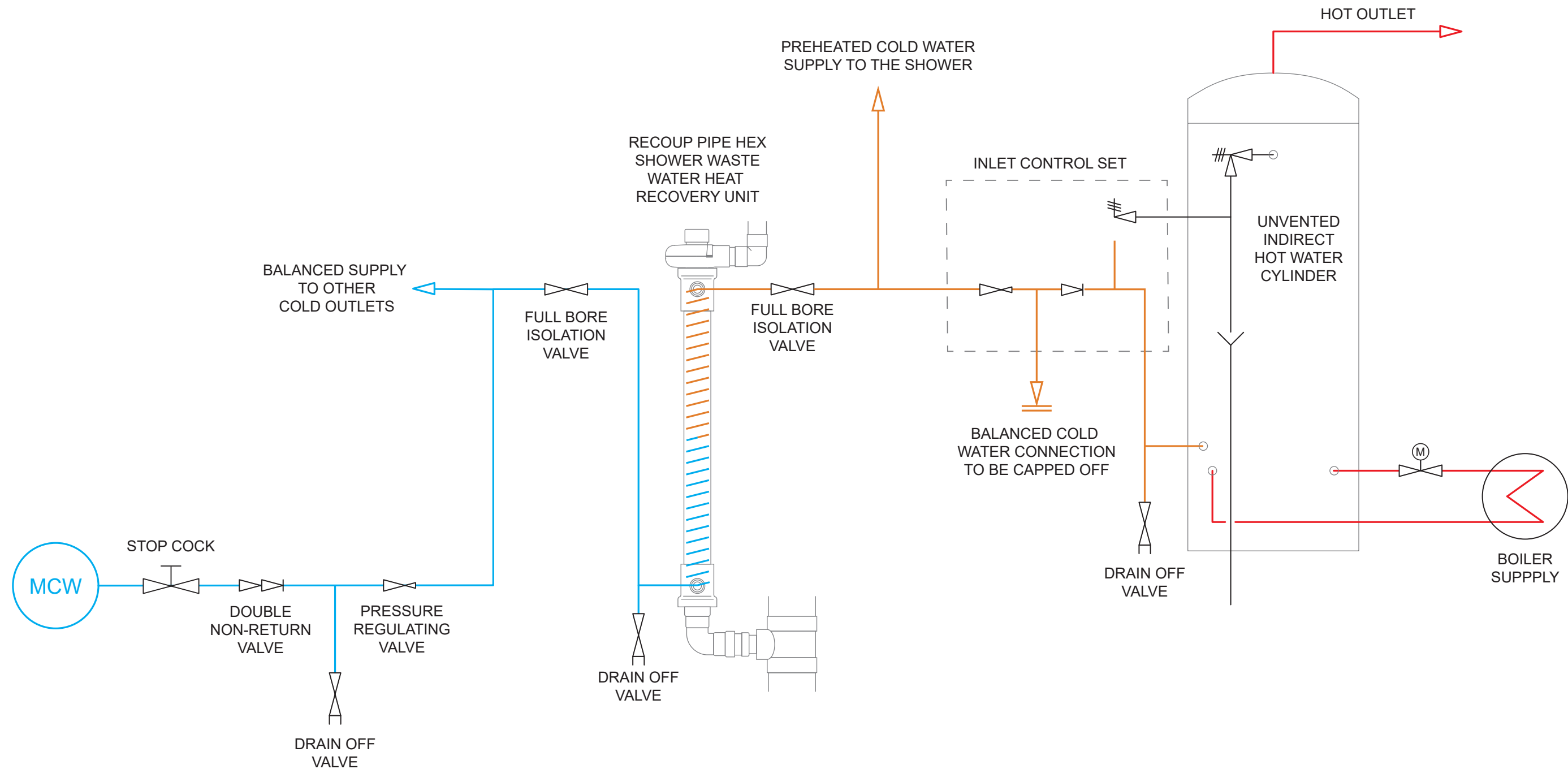


System A Installation Method

Preheated water to the cold side of the shower and the water heater



These drawings are specific to Waste Water Heat Recovery for Showers (WWHRS). Recoup Energy Solutions Ltd do not hold any responsibility for the design or M&E integration of WWHRS to the cold water services. It is the responsibility of the installer to read the specification and installation instructions. WWHRS drawings and installation documentation must be adhered to. THIS DRAWING REMAINS THE PROPERTY OF RECOUP ENERGY SOLUTIONS LTD.



t: 01379 844010
e: info@recoup.co.uk
w: www.recoup.co.uk

Title: Recoup WWHRS Pipe HEX with Unvented Cylinder - System A
Date: 07 / 05 / 2025
Scale: Scale N/A @A3